

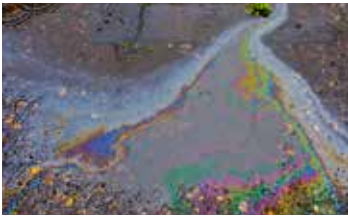


**Marathon
Pipe Line LLC**

PROTECTING YOUR SAFETY

Use your senses of **sight**, **hearing** and **smell** to recognize and respond to a potential pipeline release.

SIGNS OF A PIPELINE RELEASE INCLUDE:



A rainbow sheen on water



A pool of liquid on the ground



A dense white cloud or fog



Dead or discolored vegetation

An unusual hissing or roaring noise

An unusual odor such as gasoline, oil, sulfur or a rotten egg smell

HOW TO RESPOND TO A PIPELINE RELEASE:

Assess the situation

- ▶ Note conditions of the hazard (location of leak, liquid/vapor, color, size)
- ▶ **DO NOT** walk or touch any liquid or vapor that may have come from the pipeline
- ▶ **DO NOT** drive into the area or start any vehicles (cars, buses, etc.)
- ▶ Eliminate all ignition sources in the area

Move as far away from the leak as possible

- ▶ This may mean the evacuation of your facility
- ▶ If evacuation is necessary, evacuate to a location that is upwind
- ▶ If the location of the leak is unknown, shelter-in-place

Call 911

Call Marathon Pipe Line's 24-hour
Emergency Number at **1-833-MPL-1234**

- ▶ Provide the following information:
 - ▶ Exact location of the pipeline release
 - ▶ Name and phone number of the primary contact person

